

BeSense Field Service Procedure 200014 Retrieving Log Files
from VS200 SMS

Required Equipment:

- 1.) VS-3000 Sensor system with VS-200SMS turned on and running
- 2.) Windows XP, Windows Vista or Windows 7 laptop (or computer networked in same domain as SMS)
- 3.) Ethernet cable

BeV Sense Field Service Procedure 200014 Retrieving Log Files from VS200 SMS

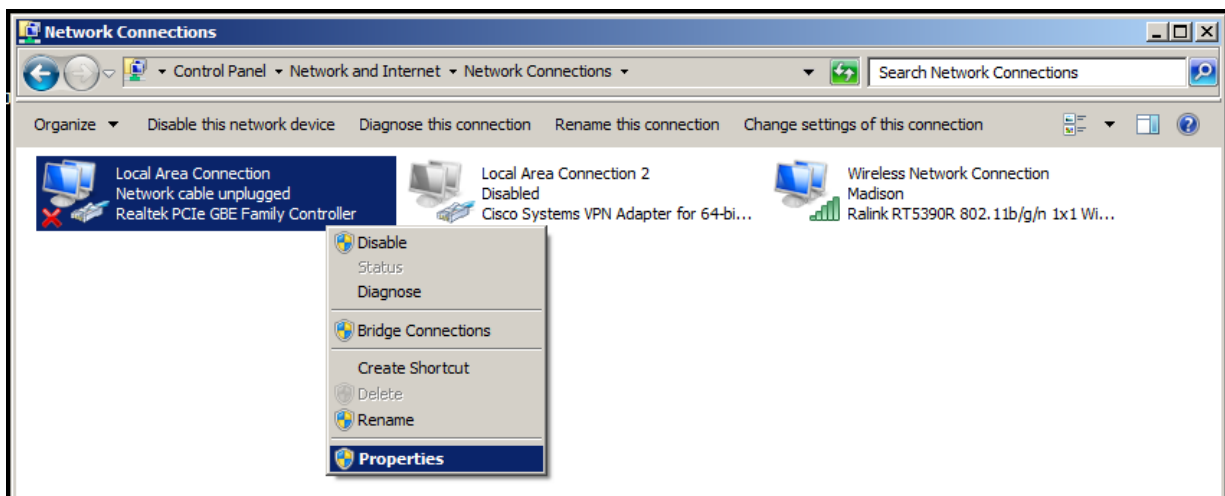
This procedure instructs you on how to **Log In** to the *VS-200 Sensor Management Station (SMS)* using the **Windows Remote Desktop** function. A secondary part of this procedure will instruct you on how to save **VitalSensors Log Files** to the *USB Drive* or *Network Shared Folder*.

The Default IP address for all *VS-300 SMS* controllers is static (**192.168.1.75**, with a subnet mask of **255.255.255.0**). You will need to set the IP address of your laptop to be in the same domain as the *VS-300 SMS* in order to log in via *Windows Remote Desktop Connection* (for example, set your laptop to *192.168.1.74* with the same Subnet Mask).

- 1.) Connect an Ethernet cable to the Ethernet port on both your laptop as well as the Ethernet port on the *VS-200 SMS* (labeled *Ethernet*).

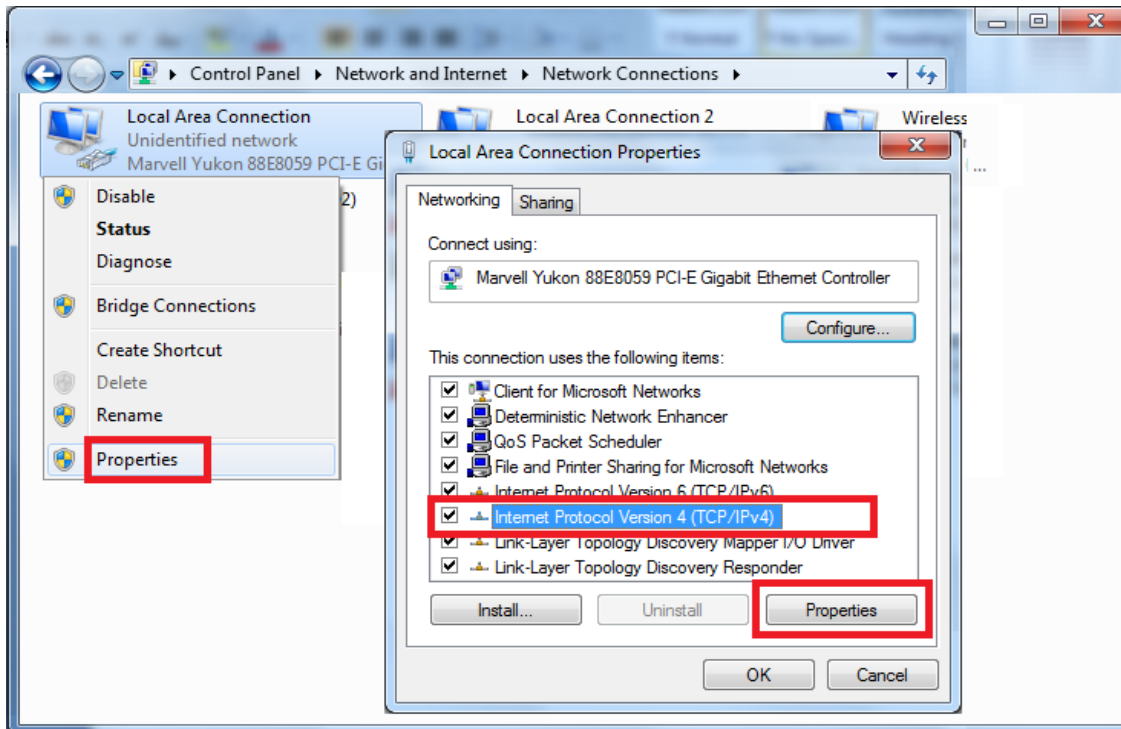


- 2.) On your laptop open *Network Connections*; highlight **LOCAL AREA CONNECTION**, right click and choose **Properties**



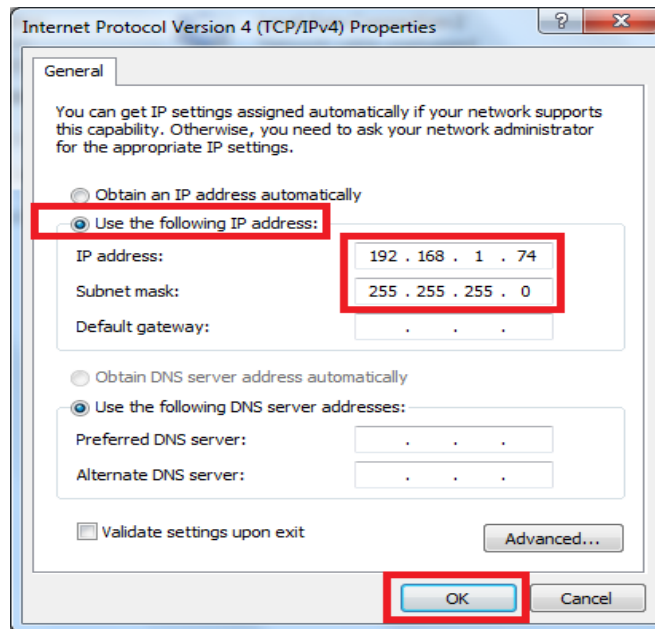
BeSense
**Field Service Procedure 200014 Retrieving Log Files
from VS200 SMS**

- a. A dialog box will appear, highlight **Internet Protocol (TCP/IP)** - - sometimes **Version 4** also a part of the title. **DO NOT** choose Version 6
- b. Click **PROPERTIES** (See Below)

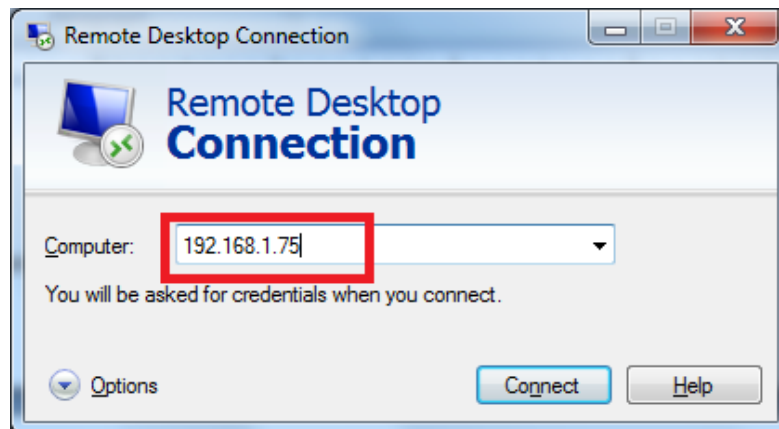


- 3.) After you click properties, set the **IP Address of Your Laptop** to be the following **192.168.1.74**, the **Subnet Mask** will be filled in automatically. See Below

BevSense Field Service Procedure 200014 Retrieving Log Files
from VS200 SMS



- 4.) Click **OK** and close out of the **Network Connections** menus. Your laptop's **IP Address** (192.168.1.74) is now in the same domain as the **IP Address** of the *VS-300 SMS* controller (192.168.1.75). You can now access the *VS-300 SMS* controller via *Windows Remote Desktop Connection*.
- 5.) On your laptop, go to **START** ==> **RUN** ==> Type **MSTSC**
- 6.) Enter the **IP Address** of the *VS-300 SMS* controller (See Below)

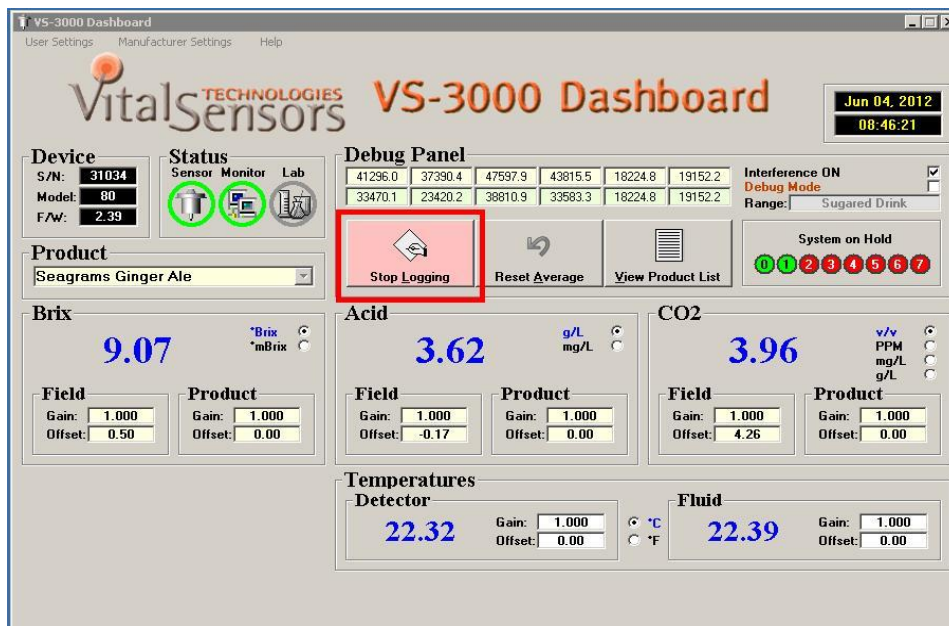


- 7.) A new window will open and you will be prompted for credentials (please note, it may take up to 30 seconds for this window to open). The default **username** is *administrator* and there is **no password** (See Below)

BevSense Field Service Procedure 200014 Retrieving Log Files from VS200 SMS



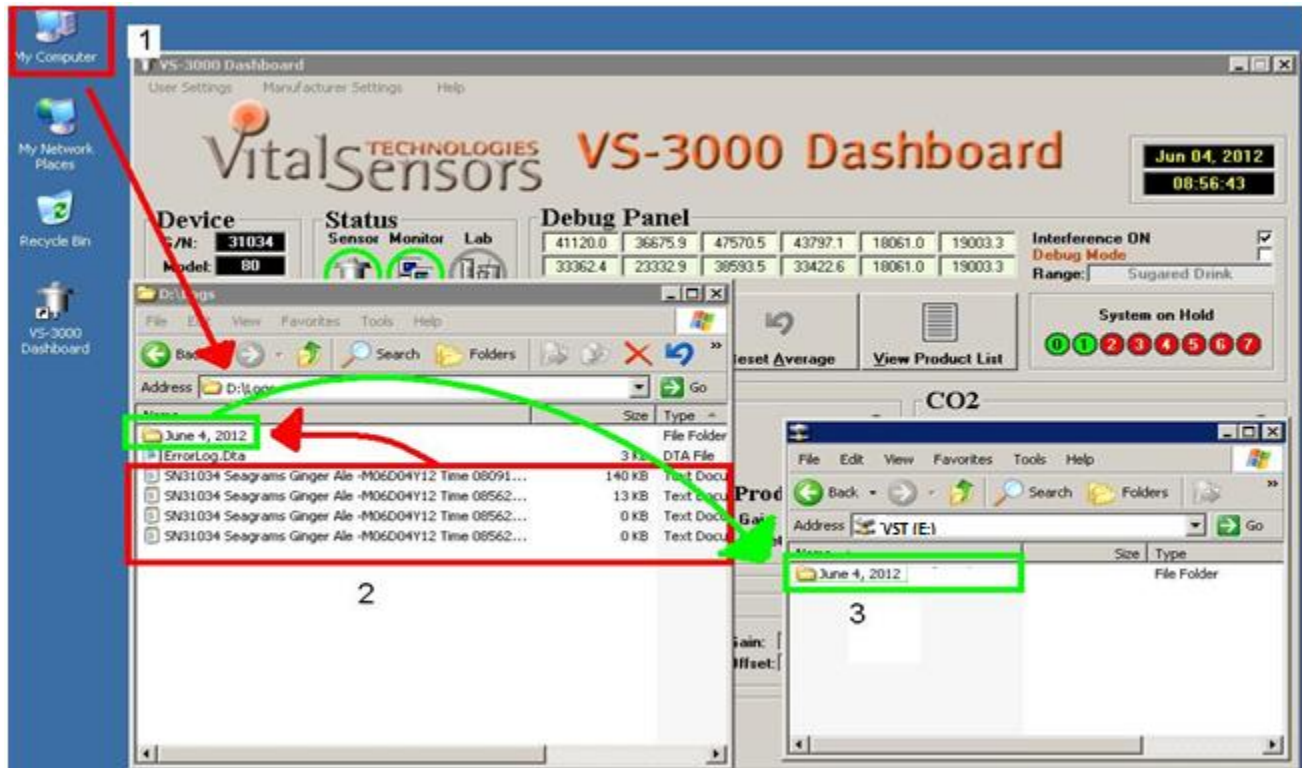
- 8.) Click **OK** to log into the *VS-300 SMS*
- 9.) You will see *VS-3000 Dashboard* screen below (please note the concentrations on your screen will be different - - CO2 only)



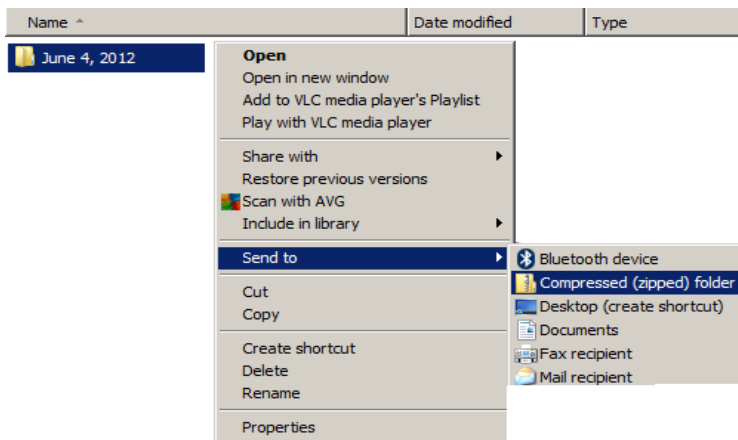
- 10.) Click **STOP LOGGING**
- 11.) In the VitalSensors Remote Desktop Window:

BevSense Field Service Procedure 200014 Retrieving Log Files from VS200 SMS

- a) Go to **My Computer/ D: / Logs /**
- b) Create a new folder with Today's date (June 4, 2012 shown below in **GREEN**)
- c) CUT all files in **D: / Logs** to the new folder
- d) CUT entire folder and paste in the **VST (E:)** USB Drive or **Network Shared Folder**

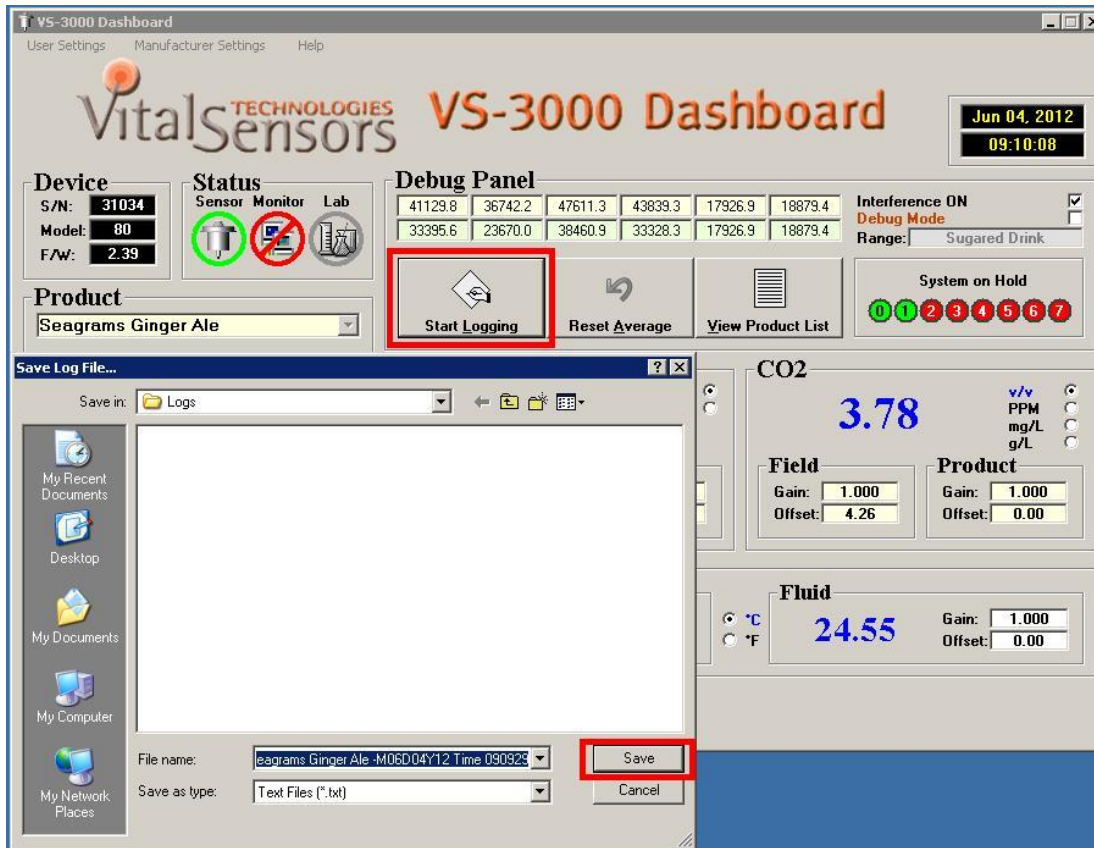


12.) After cutting and pasting the folder, RIGHT CLICK >> SEND TO >> COMPRESSED (zipped) FOLDER



BevSense
**Field Service Procedure 200014 Retrieving Log Files
from VS200 SMS**

- 13.) In the VS-3000 Dashboard main screen, Click *START LOGGING DATA*
- Use the default filename (typed in automatically for you)
 - Ensure the logging Icon turns **PINK** (if not click again)



The portion of the procedure involving *Remote Desktop* is complete – close the *Remote Desktop Window* – **LEAVE VS-3000 DASHBOARD RUNNING** inside of the *Remote Desktop Window* when you close

- 14.) **Remove the USB drive from VS-200 SMS and E-mail** the compressed (.zip) folder to peter.martinez@vitalsensortech.com
- 15.) Replace USB drive when finished