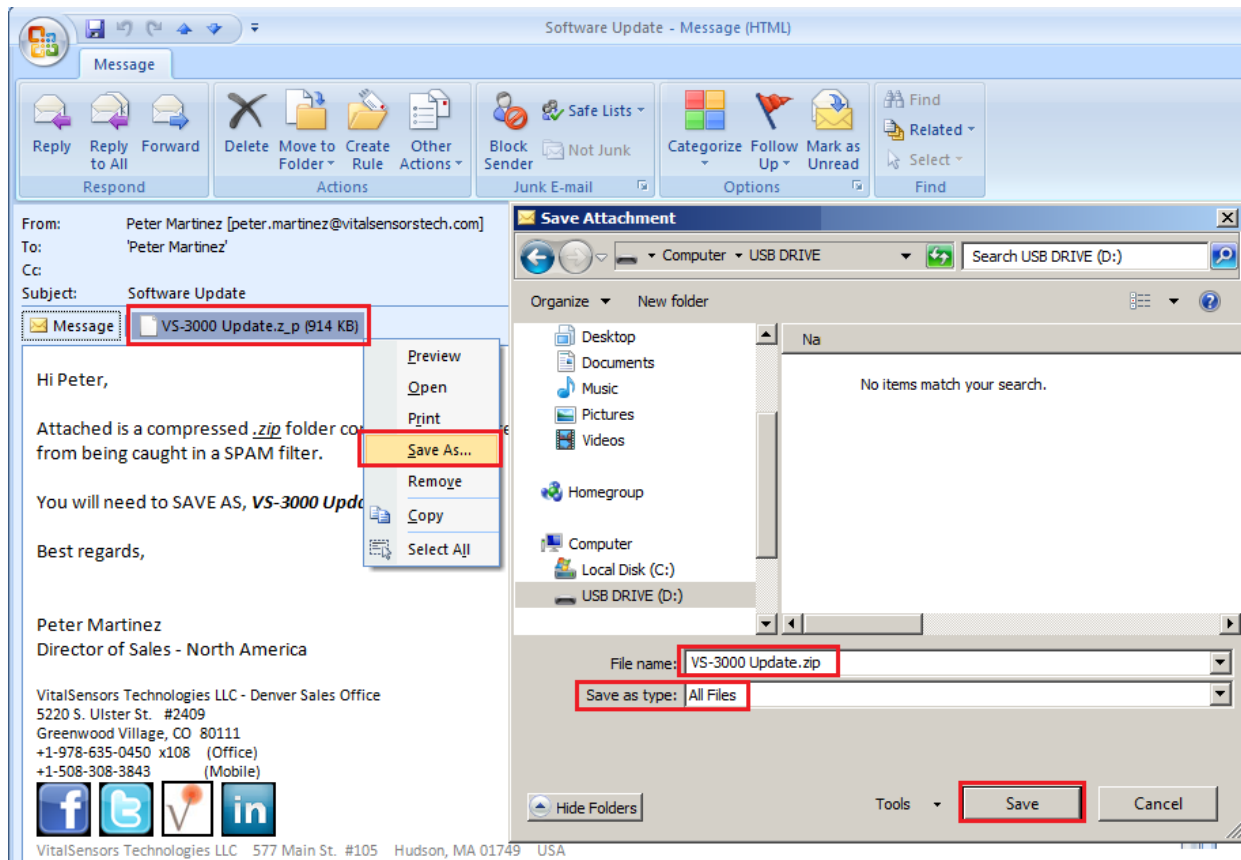
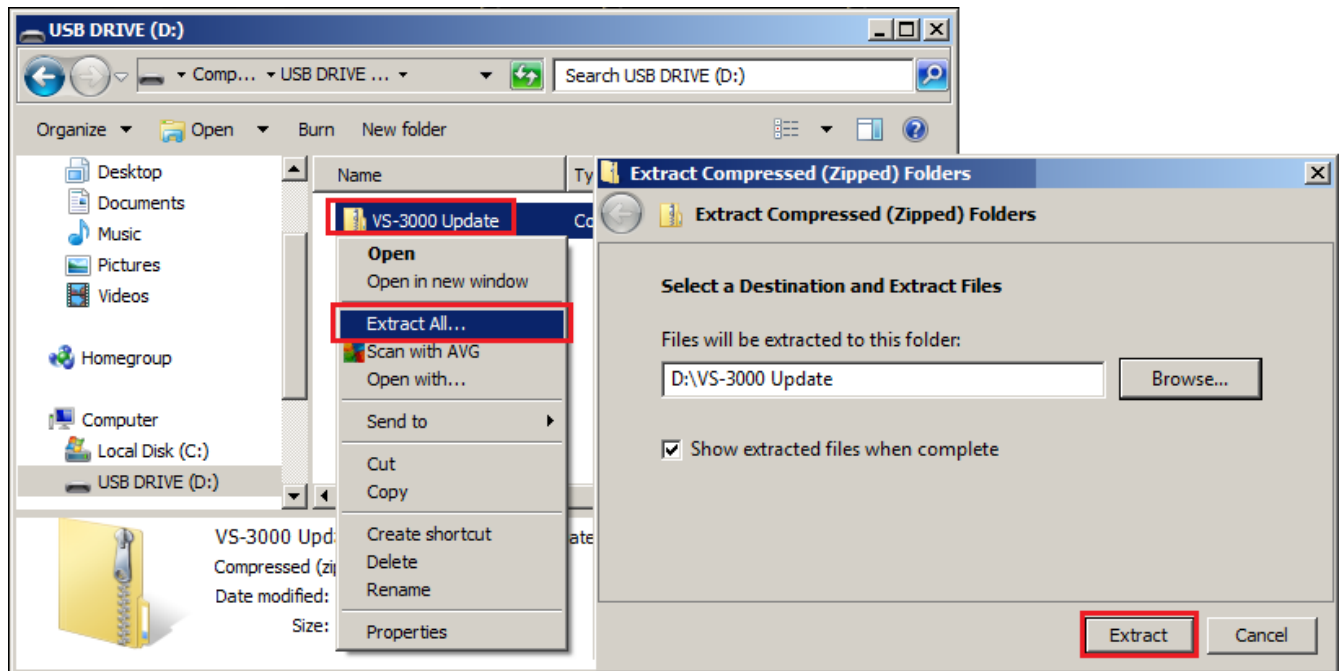


Preparation:

- 1.) There is a USB drive (called **VST**) located inside the **VS-300 SMS** controller, remove it and put it into the USB port on your laptop.
- 2.) VitalSensors will have sent an e-mail containing a compressed **.zip** folder. In the e-mail the folders was saved as **.z_p** files to prevent them from being caught in a SPAM filter.
- 3.) Save this file as Save this file as **VS-3000 Update.zip** folders to the USB Drive on your laptop/PC (see below)



- 4.) After saving to the USB Drive, Right click on the **VS-3000 Update.zip** folder and click *Extract All* and select the **VST** USB drive as the destination (see below)

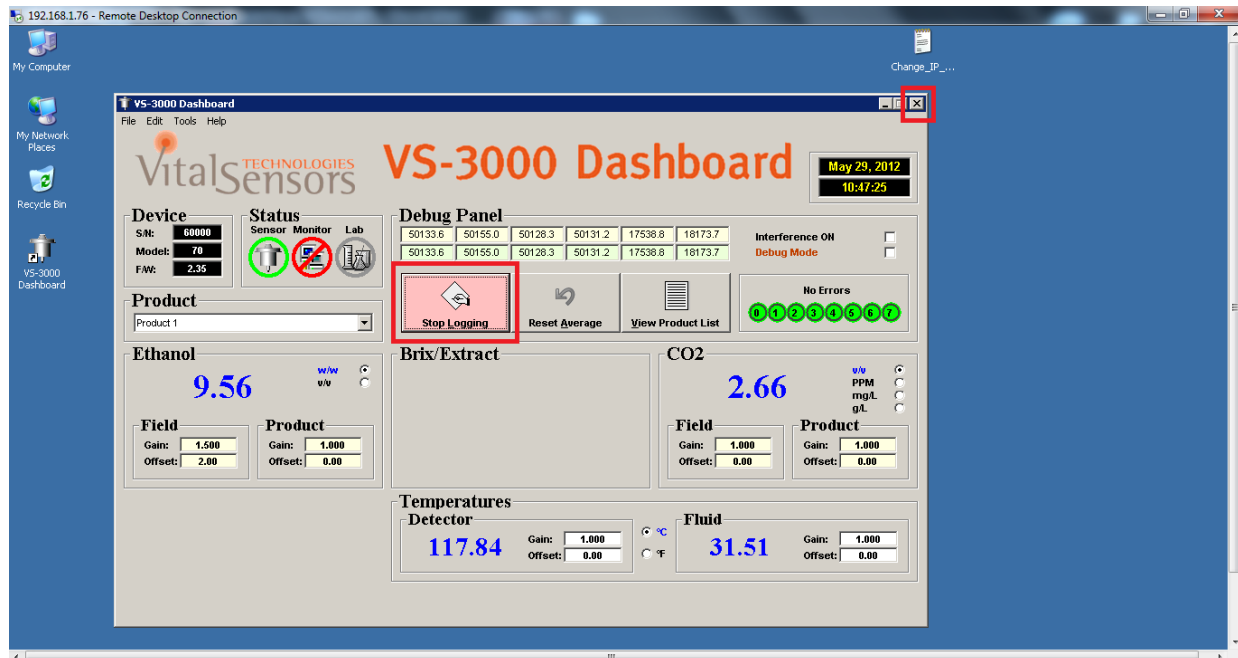


- a. You will see a folder created inside the USB drive for the VS-3000 Update.zip folder
- 5.) **DO NOT** launch / use any of these files on your laptop.
- a. Eject the USB drive from your laptop and return it to the USB port inside the VS-300 controller

Disabling Hard Disk Protection to Facilitate Software Update:

Please Note: The following steps will be performed while working within the *Remote Desktop* window

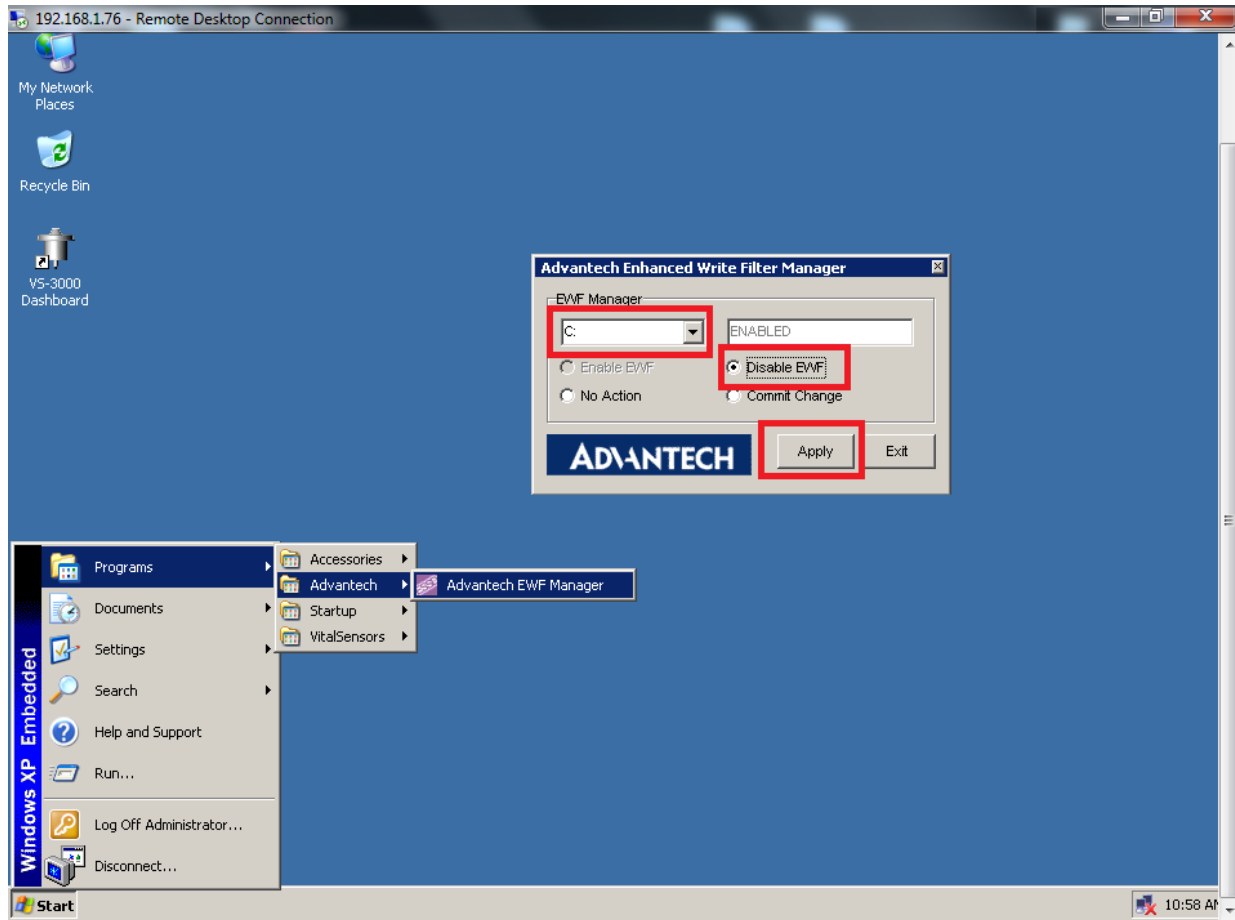
- 1.) Click *Stop Logging*; then Close this program for now. See Below



The **C:/ drive** and **MS Windows** settings on the **VS-300 / VS-200 SMS** are protected by a Write-Lock filter. You must disable this protection in order to make changes to *Update Software*

- 2.) Within the *Remote Desktop* screen, go to **START** ==> **PROGRAMS** ==> **ADVANTEC** ==> **ADVANTEC EWF MANAGER**
(See Fig. 8 below on next page)
- 3.) Select **C:/** from the drop down menu
- 4.) Select the **Disable** radio button
- 5.) Click **Apply** >> you will be prompted to confirm, click **OK**

See Below



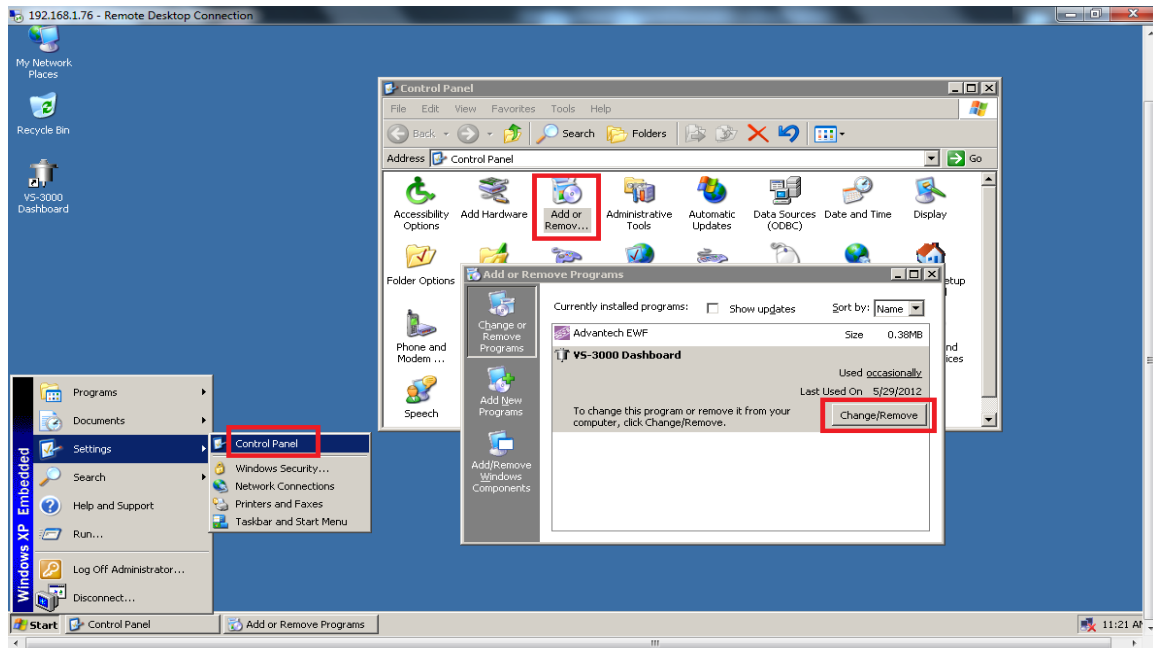
Please Note: This will cause the VS-300SMS to re-start, therefore the *Remote Desktop* connection will be broken and the session will end.

Wait approximately 2 minutes then re-connect via *Remote Desktop Connection* on YOUR LAPTOP.

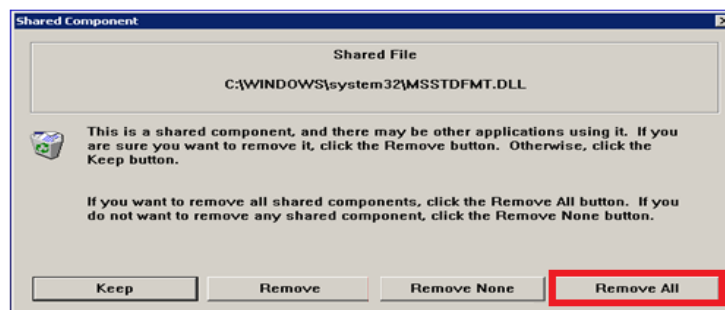
Update VS-3000 Dashboard Software:

When you log into the *VS-300 SMS*, you will notice *VS-3000 Dashboard* software running. Close it. You will now update the *VS-3000 Dashboard* software

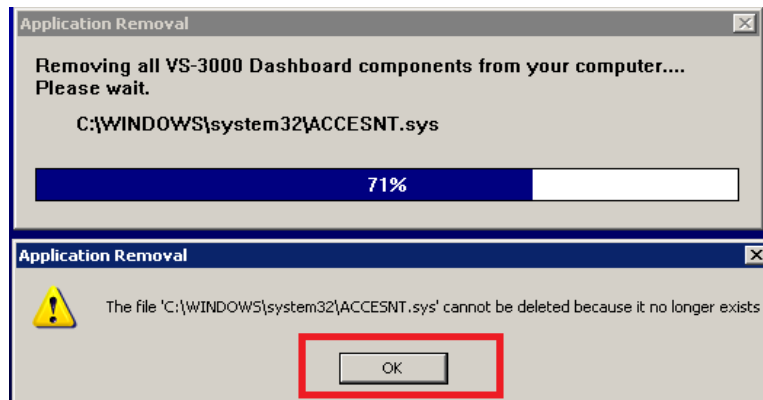
- 1.) Go to **START** =>> **SETTINGS** =>> **CONTROL PANEL** =>> **ADD / REMOVE PROGRAMS** =>> Highlight *VS-3000 Dashboard* =>> Click **CHANGE / REMOVE** (See Below)



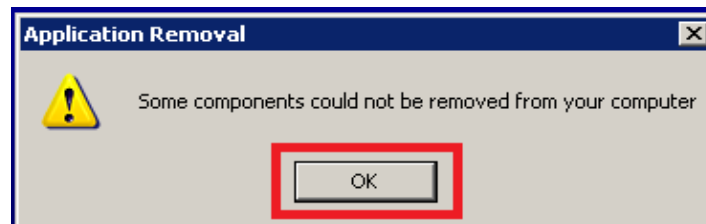
- 2.) You will be asked if you want to remove *VS-3000 Dashboard* and all of its components. Click **YES**
- 3.) You will be asked if you want to remove **Shared Components**, click **REMOVE ALL** (See Below)



- 4.) You will see an application removal notice. Click **OK** (See Below)

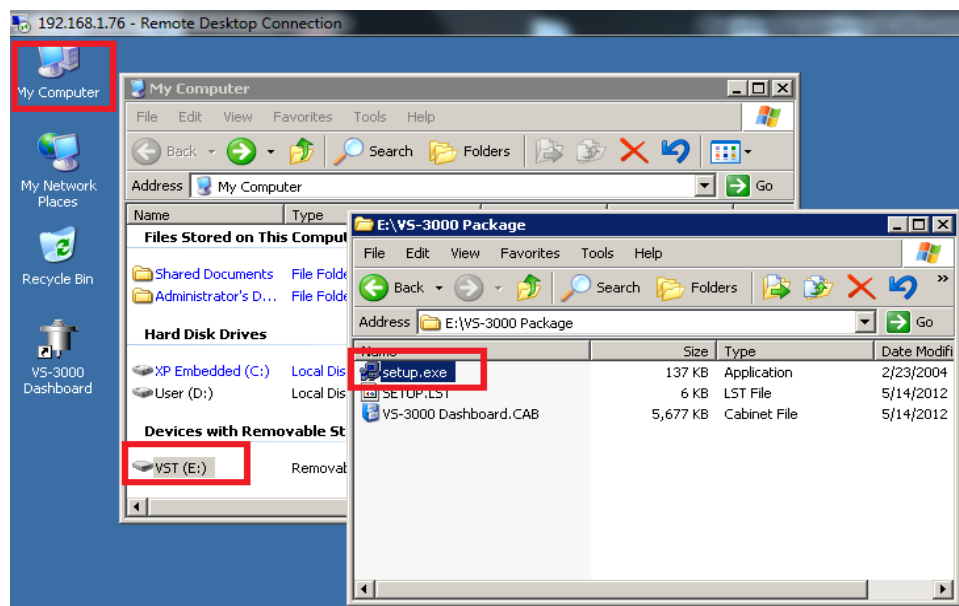


5.) You will see another application removal notice. Click **OK** (See Below)

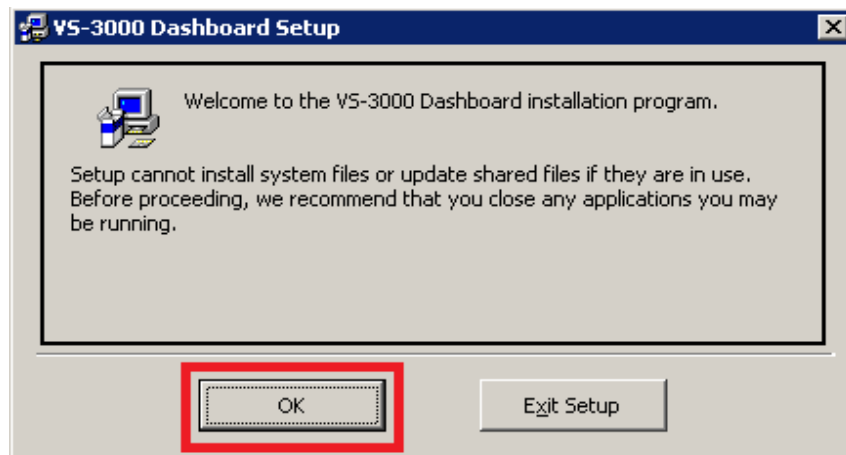


You will now make use of the installation files that were extracted from the e-mail which are located on the USB drive **VST (E:)**

6.) Within the *Remote Desktop* window, go to MY COMPUTER ==> VST (E:) ==> VS-3000 Update ==> Setup.exe (See Below)

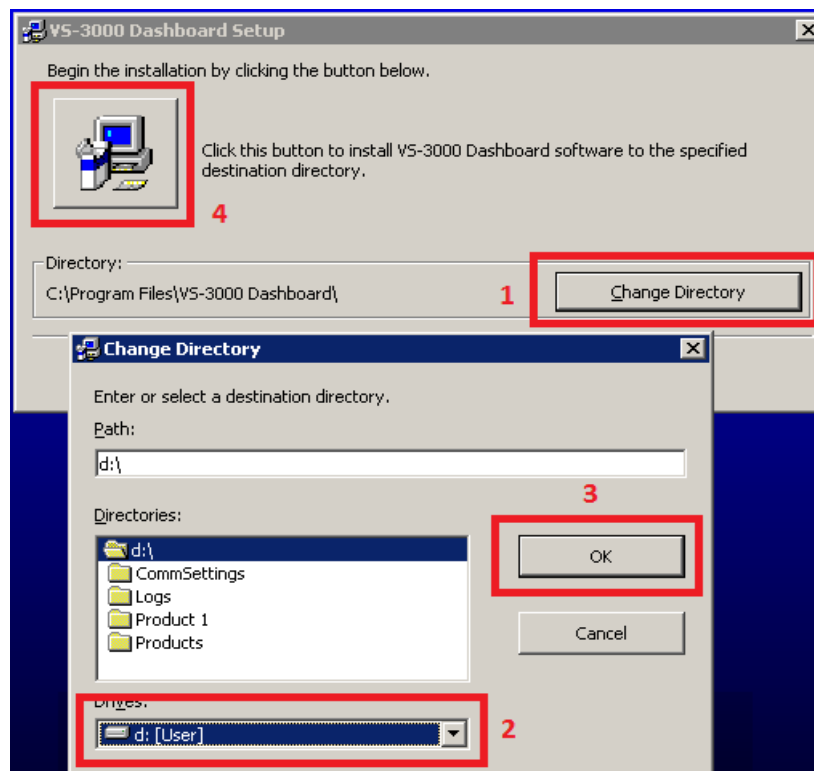


7.) You will see the following message. Click **OK** (See Below)

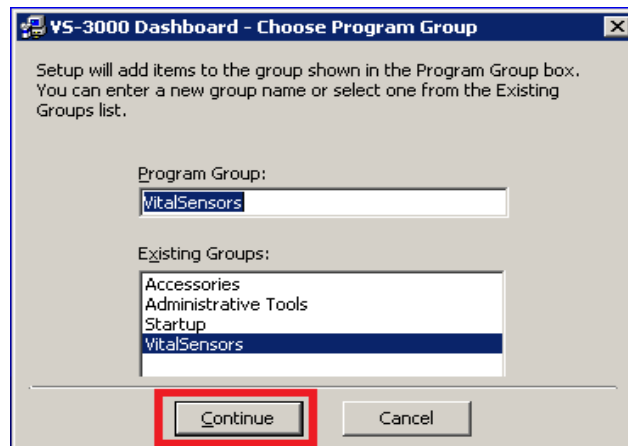


- 8.) You will now select the installation directory. DO NOT use the default directory.
- Click CHANGE DIRECTORY
 - Select the root directory in the **D:/ drive**.
 - Click **OK**
 - Click the **Computer Icon** to proceed.

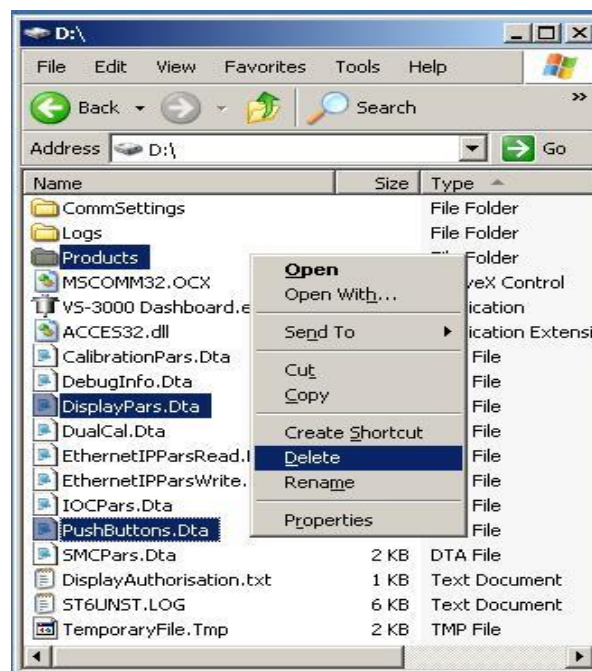
(See Below and follow steps **1-4** in **RED**)



- 9.) You will be prompted to choose a program group. Use the default **VitalSensors**. (See Below)

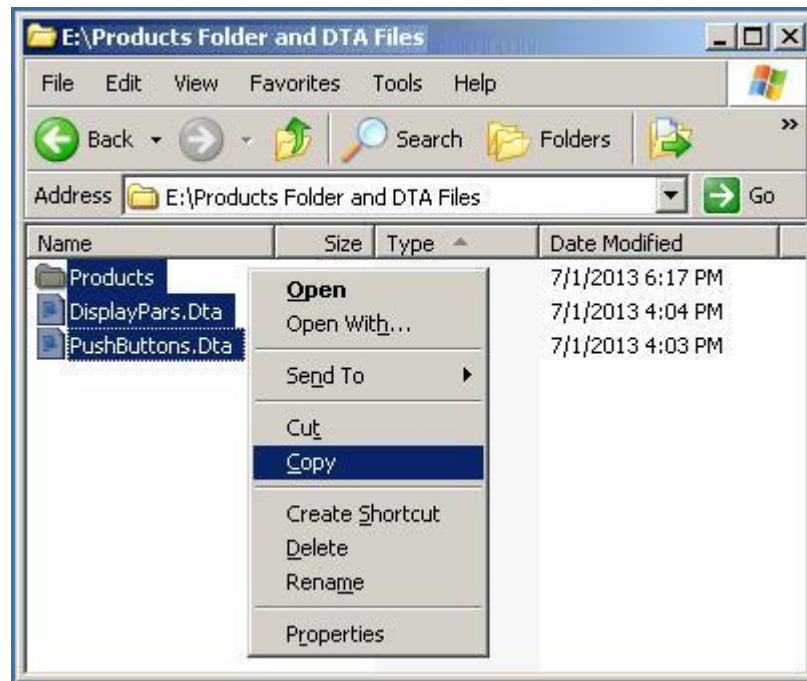


- 10.) *VS-3000 Dashboard* installation will take approximately 60 seconds to complete
- 11.) There will be a pre-existing shortcut to *VS-3000 Dashboard* on your desktop. Launch the application
 - a. **Please Note:** You may get a *Windows Desktop Security Warning*, click OK/Allow
- 12.) Load the new *EEPROM* – after it loads, **EXIT WITH RESTART**
- 13.) You will again see the main *VS-3000 Dashboard Screen*. Close the *VS-3000 Dashboard*
- 14.) Go to **My Computer** >> **D:/ drive**
- 15.) **Delete** *PRODUCTS* Folder, *DISPLAYPARS.DTA* and *PUSHBUTTONS.DTA*



16.) Go to **My Computer** >> **E:/drive (USB)** >> **Products Folder and DTA files**

17.) Copy the new *PRODUCTS* folder and two *.DTA* files into D:/



18.) Re-launch *VS-3000 Dashboard*

Brands are now loaded and the appropriate interference coefficient will be called whenever the corresponding brand is selected

19.) Click **Start Logging Data**

Re-Enable Hard Disk Protection to Protect Windows Settings and Operating System:

Please Note: The following steps will be performed while working within the *Remote Desktop* window of the VS-300 / VS-200 SMS.

- 1.) Within the *Remote Desktop* screen, go to START =>> PROGRAMS =>> ADVANTEC =>> ADVANTEC EWF MANAGER. See below.
- 2.) Select **C:/** from the drop down menu
- 3.) Select the **Disable** radio button
- 4.) Click **Apply** >> you will be prompted to confirm, click **OK**

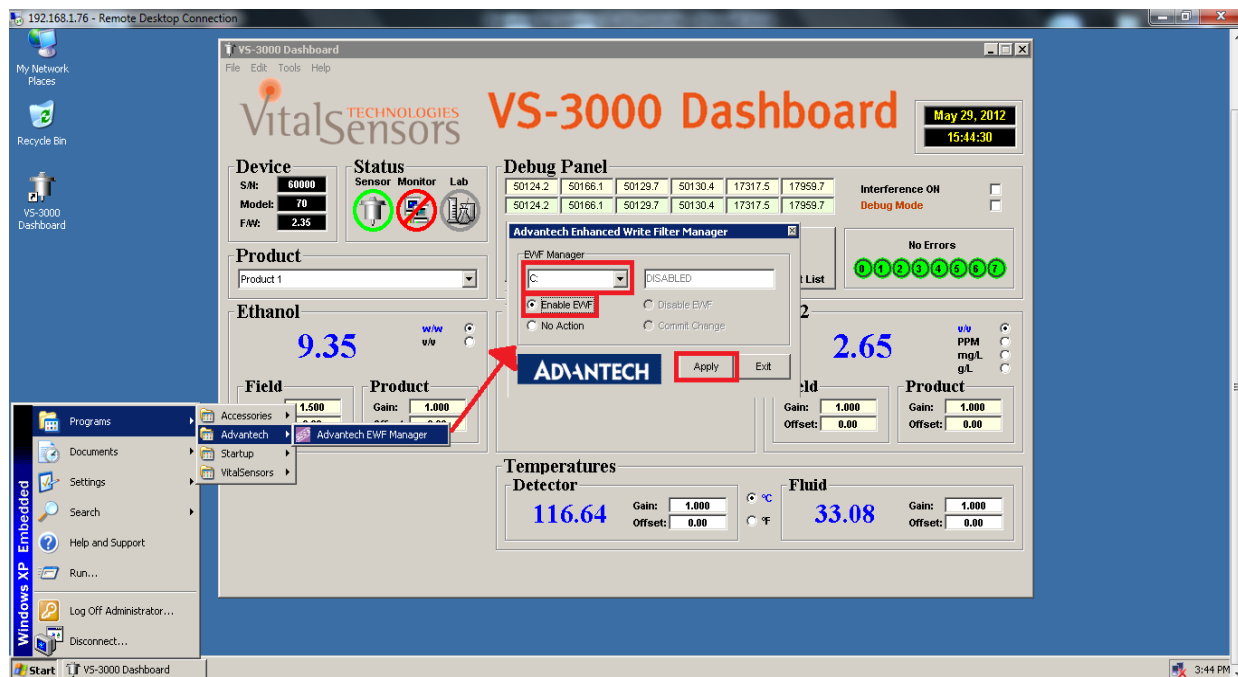


Fig. 28

Please Note: This will cause the VS-300SMS to re-start, therefore the *Remote Desktop* connection will be broken and the session will end.

AFTER 3 MINUTES, VERIFY THAT THE SMALL VFD DISPLAY ON THE FRONT OF THE VS-300 / VS-200 SMS CONTROLLER IS SHOWING THE CONCENTRATION READINGS AND YOU ARE DONE.