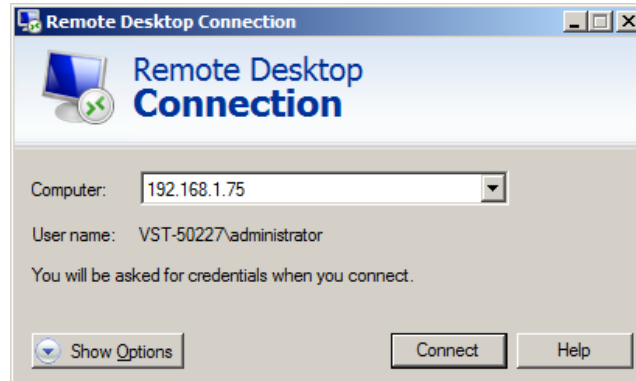


**BevSense** **Field Service Procedure 200012**  
**Loading EEPROM onto VS-300SMS**

---

- 1.) Log into the VS-300 SMS via Windows Remote Desktop

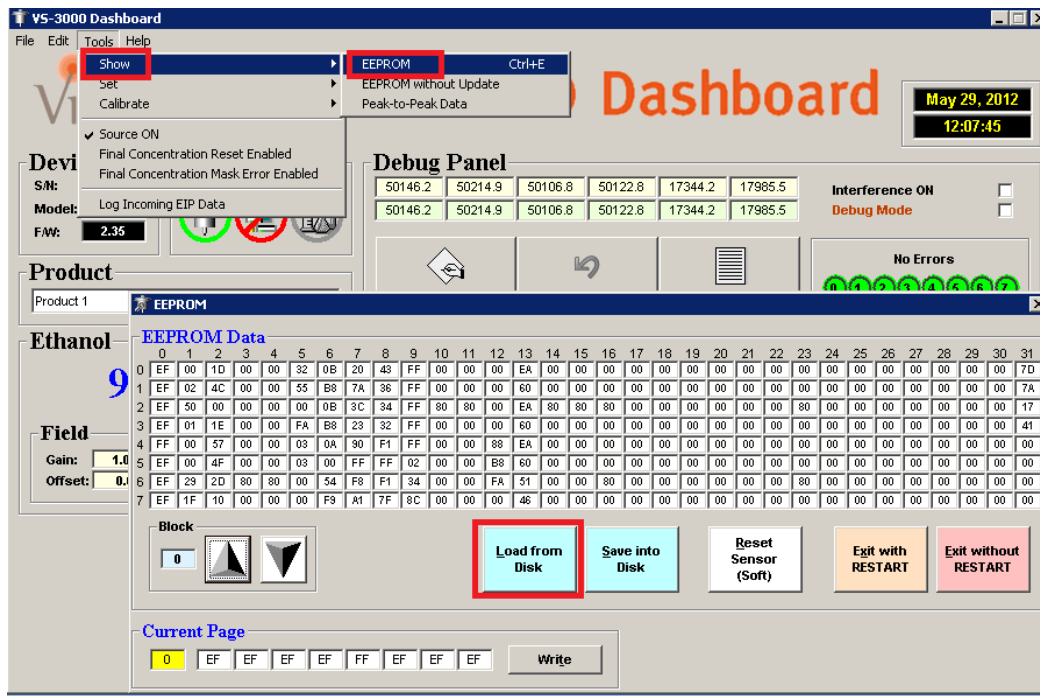


- 2.) The username is *ADMINSTRATOR* and there is no password
- 3.) After logging in you will see the *VS-300 Dashboard* user interface. Click the PINK Logging button to Stop Logging Data.
- 4.) In the *VS-3000 Dashboard* go to TOOLS ==> SHOW ==> EEPROM. The EEPROM screen will launch.

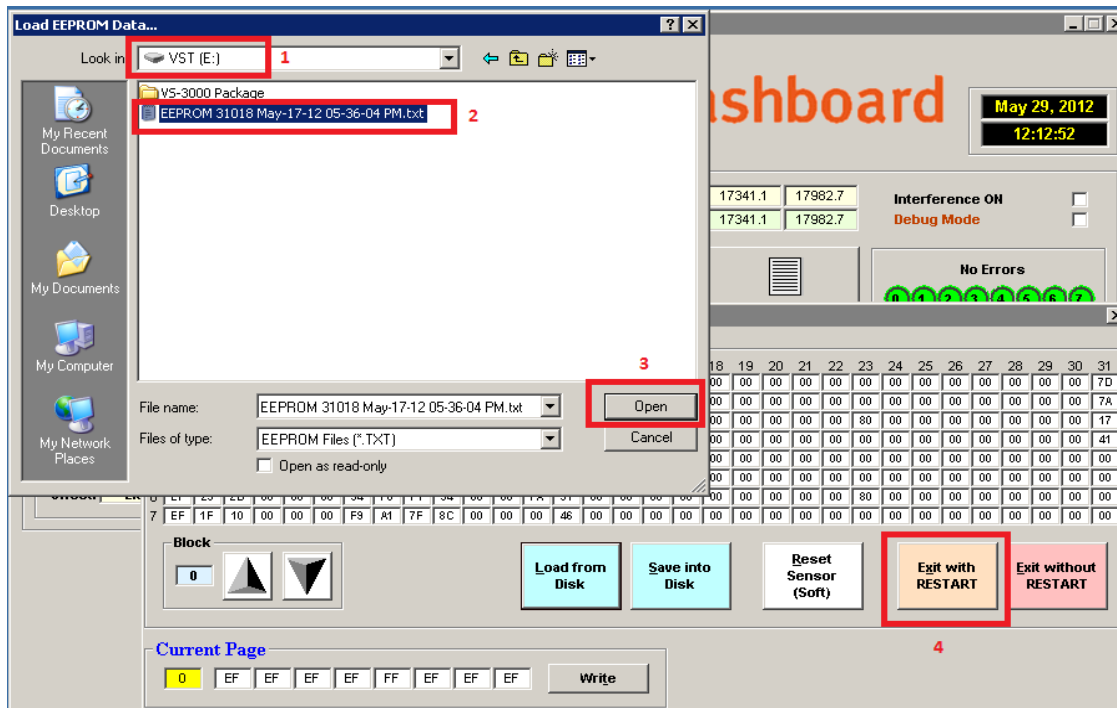
The existing EEPROM takes 60-90 seconds to populate.

- 5.) Click **LOAD FROM DISK**.

**BeV**Sense  
**Field Service Procedure 200012**  
**Loading EEPROM onto VS-300SMS**



6.) Select the **EEPROM** you saved to the USB drive **VST (E:)**. Click **OPEN**. The EEPROM will populate (this will take 60-90 seconds). Once populated, click **EXIT WITH RESTART**. (Follow Steps 1 – 4 in **RED**).

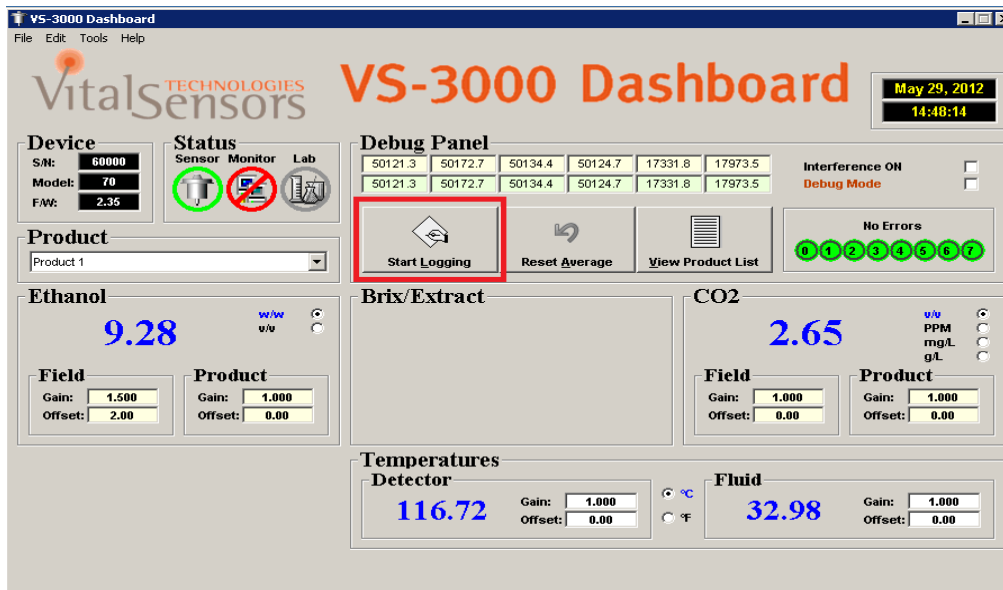


**BevSense**  
**Field Service Procedure 200012**  
**Loading EEPROM onto VS-300SMS**

---

- 7.) Upon clicking **EXIT WITH RE-START**, the *VS-3000 Dashboard* software will re-start (this will take approximately 30 seconds)
  
- 8.) After the *VS-3000 Dashboard* re-starts, close it and re-launch it one more time

- 9.) On the *VS-3000 Dashboard* main screen, click **Start Logging Data**, you will be prompted to save – use the default filename and click **SAVE**. Verify the icon turns **PINK**. See below.



The Procedure to load the EEPROM Calibration File is complete.

**BevSense** **Field Service Procedure 200012**  
**Loading EEPROM onto VS-300SMS**

---

Close out of the Remote Desktop window, but DO NOT close the VS-3000 Dashboard Software, it will remain active 24x7 even after you close remote desktop.