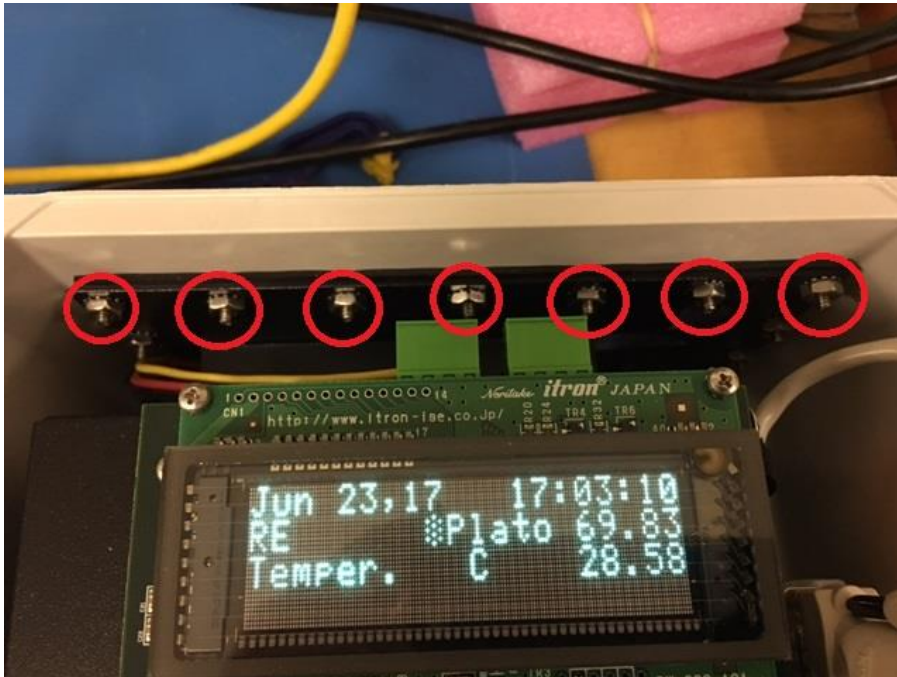


Field Service Procedure 200011

Adjusting Power Supply Voltage SMS

Procedure:

- 1.) Remove the seven screws and nuts that attach internal black box to the heat sink



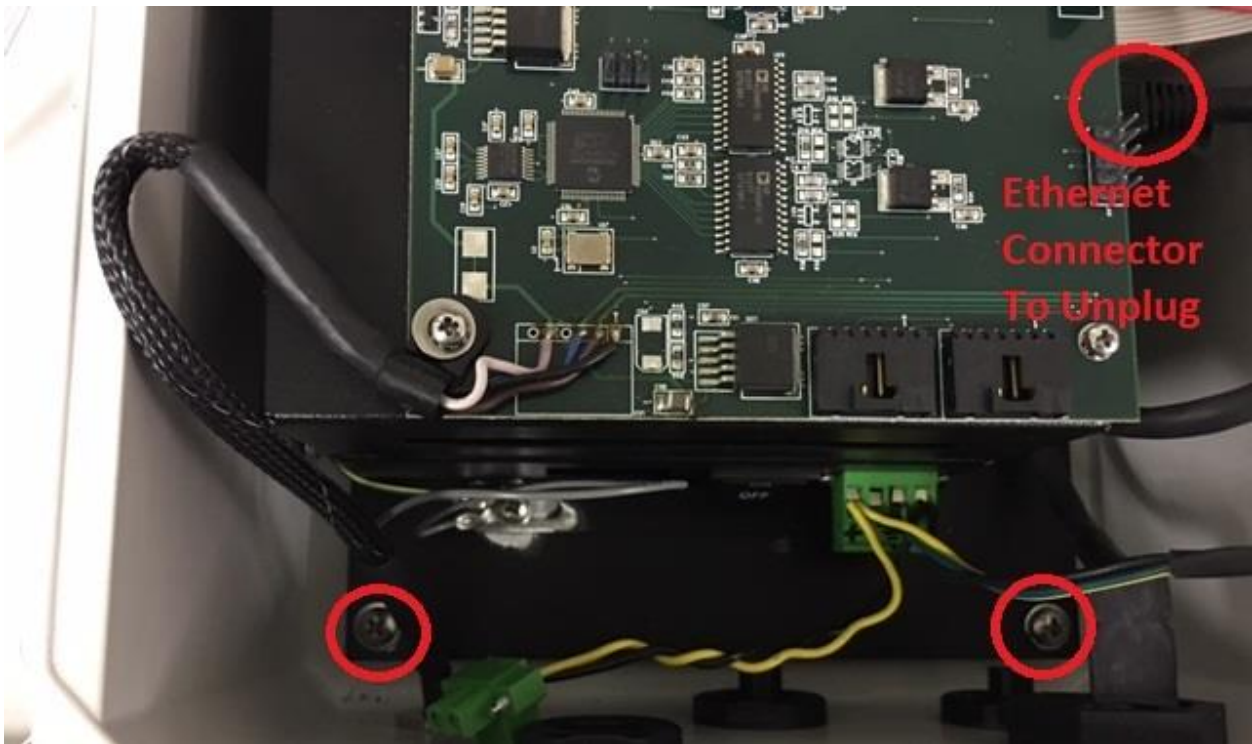
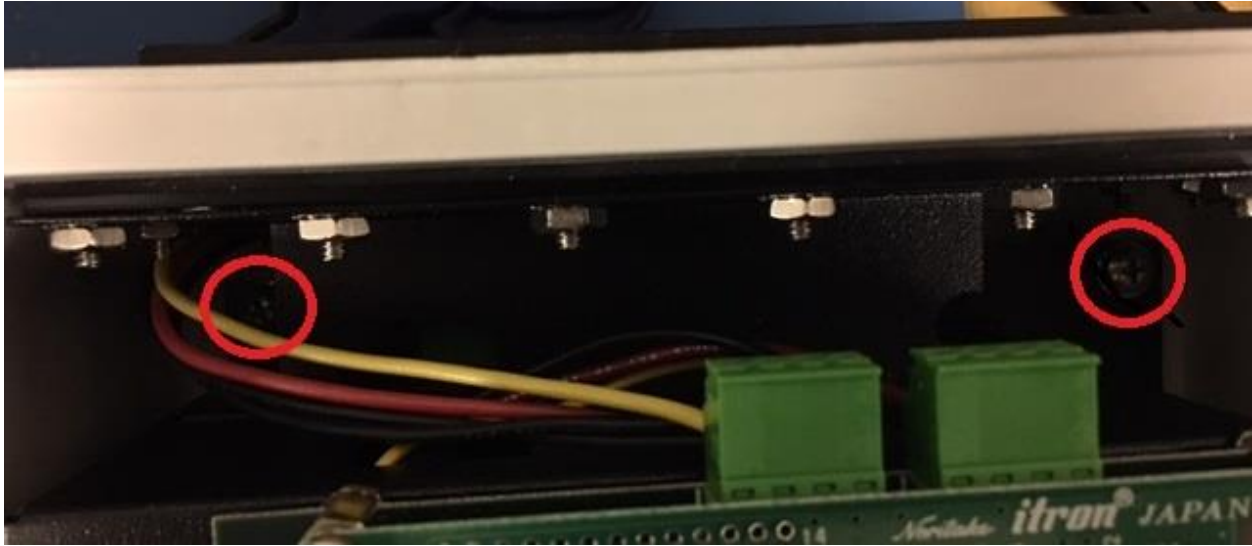
- 2.) Remove the Sensor cable and nut that mounts the sensor connector to the SMS fiberglass box.



Field Service Procedure 200011

Adjusting Power Supply Voltage SMS

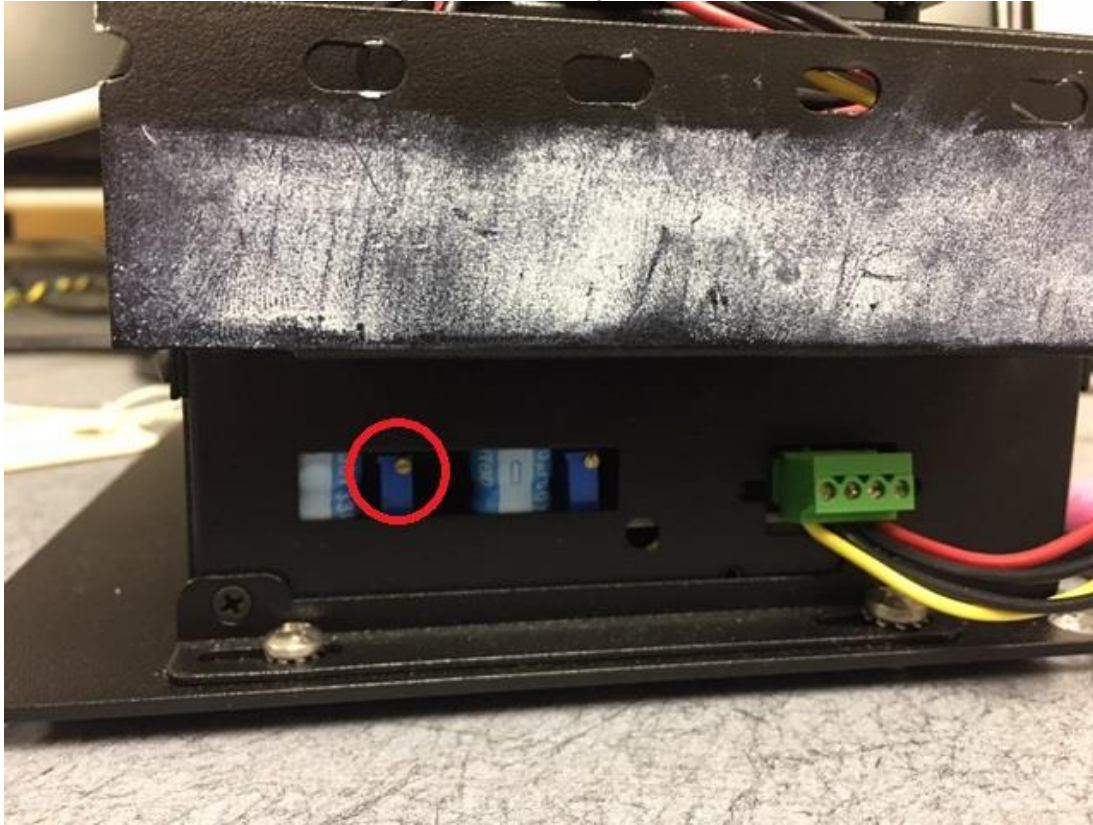
3.) Remove the 4 Baseplate Screws. Then unplug the Ethernet connector from the SMS



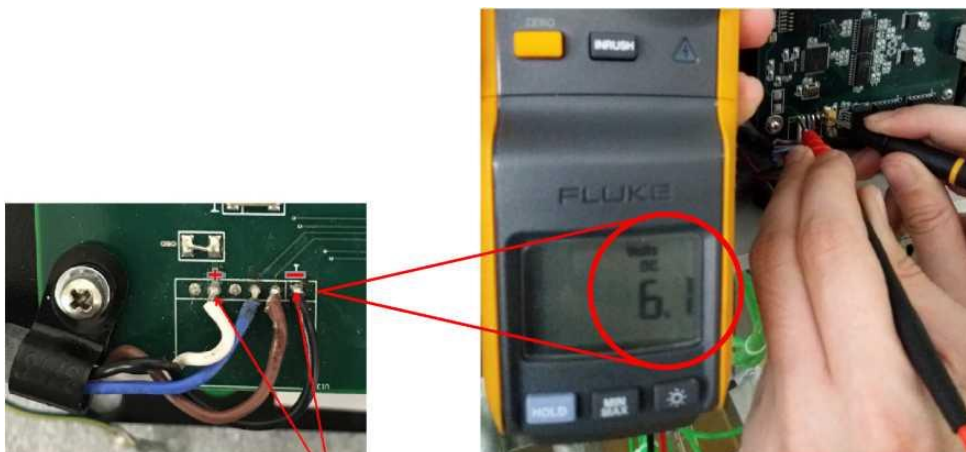
Field Service Procedure 200011

Adjusting Power Supply Voltage SMS

- 4.) Provide 24VDC power to the SMS insert assembly. Attach the sensor to the SMS to give the 5VDC power supply the proper load. Adjust the 5 Volt DC supply potentiometer until the voltage reads 5.9-6.1VDC. Turn potentiometer adjustment screw Clockwise to increase the voltage.



- 5.) Check the DC voltage between these two points should read between 5.9-6.1 VDC



Field Service Procedure 200011

Adjusting Power Supply Voltage SMS

- 6.) Before reassembling the SMS run the box with sensor and sensor cable attached for proper load for two days to make sure the adjusted voltage remains constant.
- 7.) Reassemble the SMS by reversing the steps above.